



# SonicWALL WAN Acceleration Appliance (WXA) Series

WAN ACCELERATION

Significantly enhanced WAN performance and user experience

In today's distributed enterprise, applications such as Microsoft® SharePoint and Windows® File Sharing transmit an increasing number of files and data sets over Wide Area Networks (WANs), overburdening available WAN bandwidth. To make matters worse, such collaboration applications can inefficiently retransmit entire files (rather than just incremental changes) multiple times, unnecessarily increasing WAN traffic. IT often responds by expending budget on more bandwidth or enhanced services. Alternatively, WAN acceleration technology can resolve the problem by allowing more efficient utilization of the existing network bandwidth.

The SonicWALL® WAN Acceleration Appliance (WXA) Series reduces application latency and conserves bandwidth, significantly enhancing WAN application performance and user experience for organizations with remote and branch offices. After initial data transfer, the WXA Series dramatically reduces all subsequent traffic by transmitting only new or changed data across the network. The WXA de-duplicates data traversing the WAN, thus reducing application latency and conserving bandwidth. Other acceleration features include data caching, metadata caching and data-in-flight compression.

The WXA Series is comprised of the WXA 500 Live CD, WXA 2000 and WXA 4000 hardware appliances, and WXA 5000 Virtual Appliance. Unlike standalone WAN acceleration products, WXA solutions are integrated add-ons to SonicWALL E-Class Network Security Appliance (NSA), NSA and TZ Series appliances that are deployed as Next-Generation Firewalls. This integrated solution streamlines the placement, deployment, configuration, routing, management and integration of WXA with other components, such as VPNs. When deployed in conjunction with SonicWALL Application Intelligence and Control Service, the WXA offers the unique combined benefit of both prioritizing application traffic (using QoS or bandwidth management) and minimizing traffic between sites, resulting in optimal network performance.

- Simplified deployment
- Increased security
- Protocol optimization
- Byte caching and file caching
- Reduced TCO
- Data compression
- Windows File Sharing (WFS) acceleration
- Visualization

## Features and Benefits

**Simplified deployment** through complete provisioning and configuration by a SonicWALL firewall drastically reduces the complexity of deploying, routing and integrating multiple WXA appliances across the network.

**Increased security** using SonicWALL Reassembly-Free Deep Packet Inspection™ technology provides an additional layer of security by scanning all traffic and data for threats before sending it to the WAN acceleration appliance.

**Protocol optimization** provides LAN-like application performance for users accessing resources over the WAN by decreasing the latency and chattiness presented by inefficient protocols or application communication.

**Byte caching and file caching** reduce bandwidth consumption by orders of magnitude, extending the life of existing WAN links and providing a better user experience.

**Reduced total cost of ownership (TCO)** arrives through increased efficiency and overall utilization of existing WAN bandwidth, which in turn avoids costly and unnecessary WAN upgrades.

**Data compression** across the WAN increases performance and reduces latency.

**Windows File Sharing (WFS) acceleration** helps improve response times while decreasing the amount of data transferred when downloading or accessing files from a shared drive.

**Visualization** delivers real-time insight into the performance gains obtained by introducing WAN acceleration into the network.



DYNAMIC SECURITY FOR THE GLOBAL NETWORK™



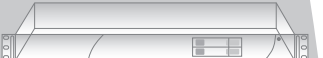
SonicWALL WXA 500 Live CD with Software Subscription and Dynamic Support 24x7 (1-year)  
01-SSC-9438



SonicWALL WXA 2000 with Dynamic Support 24x7 (1-year)  
01-SSC-9440



SonicWALL WXA 4000 with Dynamic Support 24x7 (1-year)  
01-SSC-9442



SonicWALL WXA 5000 with Software Subscription and Dynamic Support 24x7 (1-year)  
01-SSC-9444

**Software and Support Renewals**  
SonicWALL WXA 5000 Virtual Appliance Software Subscription and Dynamic Support 24x7 (1-year)\*  
01-SSC-9455

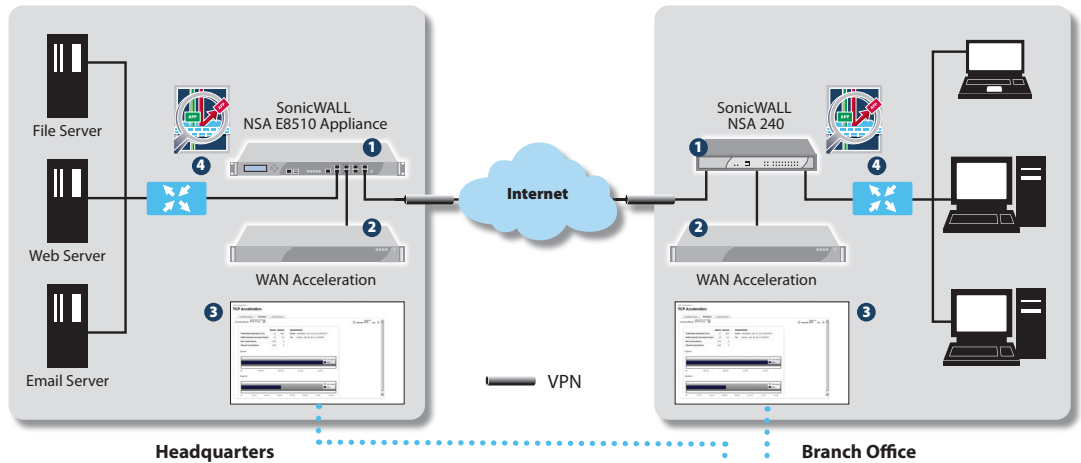
SonicWALL Dynamic Support 24x7 for WXA 4000 (1-year)\*  
01-SSC-9452

SonicWALL Dynamic Support 24x7 for WXA 2000 (1-year)\*  
01-SSC-9449

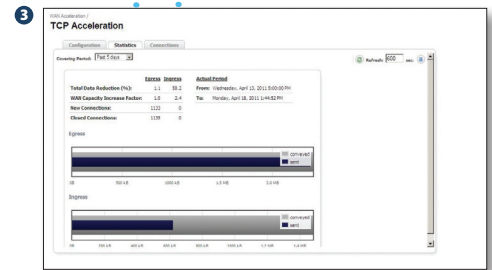
SonicWALL WXA 500 Live CD Software Subscription and Dynamic Support 24x7 (1-year)\*  
01-SSC-9446

\*Two and three year options are also available.

## SonicWALL WXA Series Deployment Scenario



- 1 SonicWALL Next-Generation Firewall appliances provide site-to-site VPN connectivity between a remote or branch office and the main corporate headquarters.
- 2 SonicWALL WXA appliances improve WAN performance by decreasing latency, while reducing the amount of data traversing through the VPN.
- 3 Visualization shows the performance gains and benefits of introducing WAN acceleration into the network.
- 4 SonicWALL Application Intelligence and Control prioritizes and controls application traffic.



## Specifications

|                                    | WXA 500 Live CD  | WXA 2000                                     | WXA 4000                        | WXA 5000 Virtual Appliance |
|------------------------------------|------------------|--|---------------------------------|----------------------------|
| <b>Platform</b>                    | Software/CD      | Hardware Appliance                           | Hardware Appliance              | Virtual Appliance (VMWare) |
| <b>Maximum Users<sup>1</sup></b>   | 20               | 120  | 240                             | 360                        |
| <b>Maximum Flows</b>               | 100              | 600  | 1,200                           | 1,800 <sup>3</sup>         |
| <b>Byte Caching</b>                |                  |  | Yes                             | Yes                        |
| <b>TCP/File Compression</b>        |                  |  | Yes                             | Yes                        |
| <b>Management</b>                  |                  |  | Requires SonicOS 5.8.1 or later |                            |
| <b>WFS/TCP Visualization</b>       |                  |  | Yes                             | Yes                        |
| <b>WFS Acceleration</b>            | Yes <sup>2</sup> |  | Yes                             |                            |
| <b>SNMP</b>                        |                  |  | Yes                             | Yes                        |
| <b>Syslog</b>                      |                  |  | Yes                             | Yes                        |
| <b>Operating System</b>            |                  |  | Hardened SonicWALL Linux OS     |                            |
| <b>Rack-mount Chassis</b>          |                  |  | 1 RU                            |                            |
| <b>CPU</b>                         |                  | Intel 2.0GHz                                 | Intel Dual Core 2.0GHz          |                            |
| <b>RAM</b>                         |                  | 2 GB   | 4 GB                            |                            |
| <b>Hard Drive</b>                  |                  | 250 GB                                       | 2x250 GB                        |                            |
| <b>Redundant Disk Array (RAID)</b> |                  |  | RAID 1                          |                            |
| <b>Dimensions</b>                  |                  | 17.0 x 16.4 x 1.7 in/43.18 x 41.59 x 4.44 cm |                                 |                            |
| <b>Weight</b>                      |                  | 16 lbs/7.26 kg                               |                                 |                            |
| <b>WEEEE Weight</b>                |                  | 16 lbs/7.37 kg                               |                                 |                            |
| <b>Power Consumption (Watts)</b>   |                  | 86   | 101                             |                            |
| <b>BTUs</b>                        |                  | 293  | 344                             |                            |
| <b>MTBF (Years)</b>                |                  | 14.27  |                                 |                            |

| WXA 500 Live CD Only           |  |
|--------------------------------|--|
| <b>Minimum CPU</b>             | Pentium 4 or higher                            |
| <b>External Storage</b>        | CD/DVD ROM Bay                                 |
| <b>Allocated Memory</b>        | Minimum of 2 GB RAM                            |
| <b>Allocated Storage</b>       | Minimum of 80 GB Hard Disk                     |
| <b>Storage Controller</b>      | SATA Controller with Support for IDE Emulation |
| <b>Additional Requirements</b> | Monitor/Keyboard                               |

| WXA 5000 Virtual Appliance Only            |   |
|--|---|
| <b>Hypervisor</b>                          | ESX and ESXi (version 4.0 and newer)  |
| <b>Operating System Installed</b>          | Hardened SonicLinux   |
| <b>Minimum CPU</b>                         | 2 x 1.6 GHz   |
| <b>Allocated Memory</b>                    | 4 GB  |
| <b>Applied Disk Size</b>                   | 250 GB  |
| <b>VMware Hardware Compatibility Guide</b> | <a href="http://vmware.com/resources/compatibility/search.php">http://vmware.com/resources/compatibility/search.php</a> |

<sup>1</sup> Maximum users may vary depending on the number of flows being generated per user.  
<sup>2</sup> WFS Acceleration is available only when the Live CD image is installed on the provided hardware.  
<sup>3</sup> The max number of flows is dependent on the hardware specifications and may vary depending on the hardware configuration. The specifications provided are the minimum requirements to run the WXA Virtual Appliance.

**SonicWALL, Inc.**  
2001 Logic Drive, San Jose, CA 95124  
T +1 408.745.9600 F +1 408.745.9300  
[www.sonicwall.com](http://www.sonicwall.com)

**SonicWALL's line-up of dynamic security solutions**

NETWORK SECURITY

SECURE REMOTE ACCESS

WEB AND E-MAIL SECURITY

BACKUP AND RECOVERY

POLICY AND MANAGEMENT

**SONICWALL**  
DYNAMIC SECURITY FOR THE GLOBAL NETWORK™