

SOPHOS

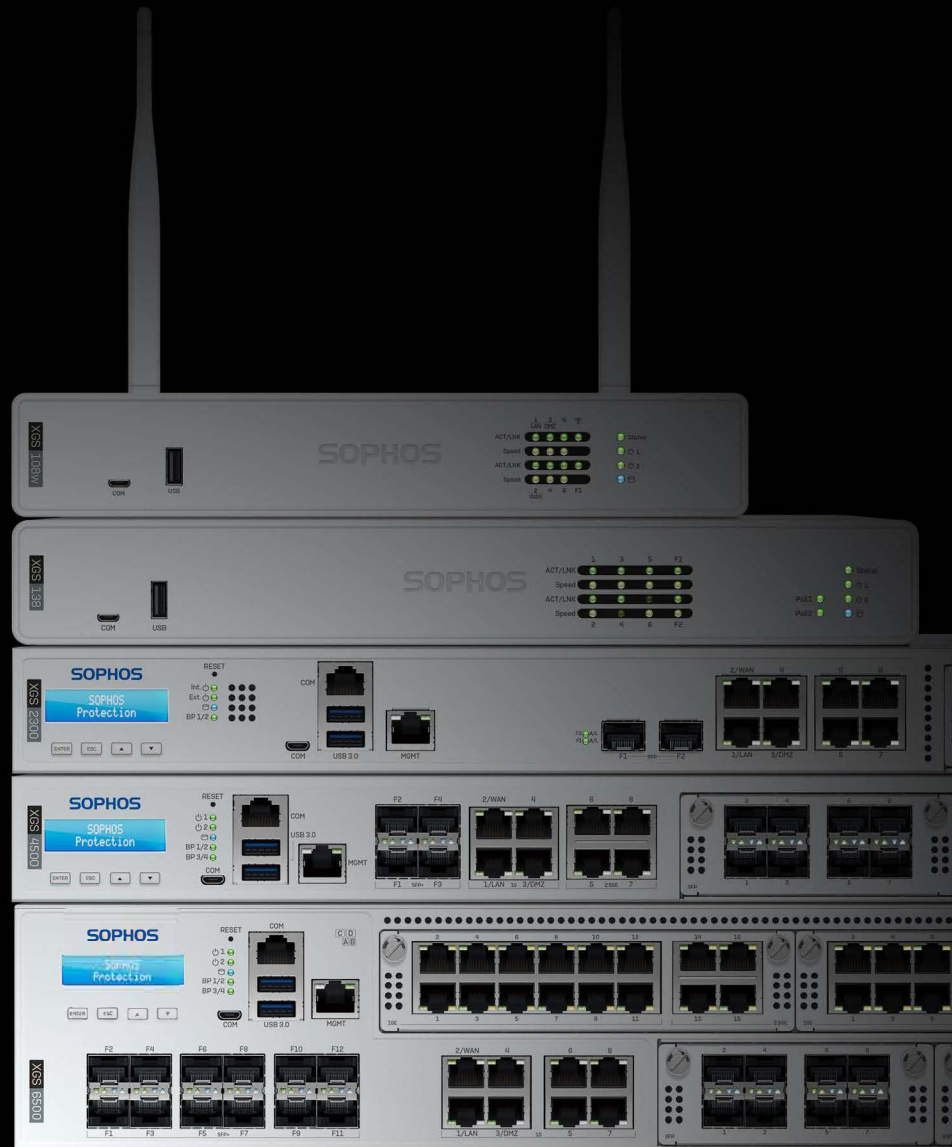


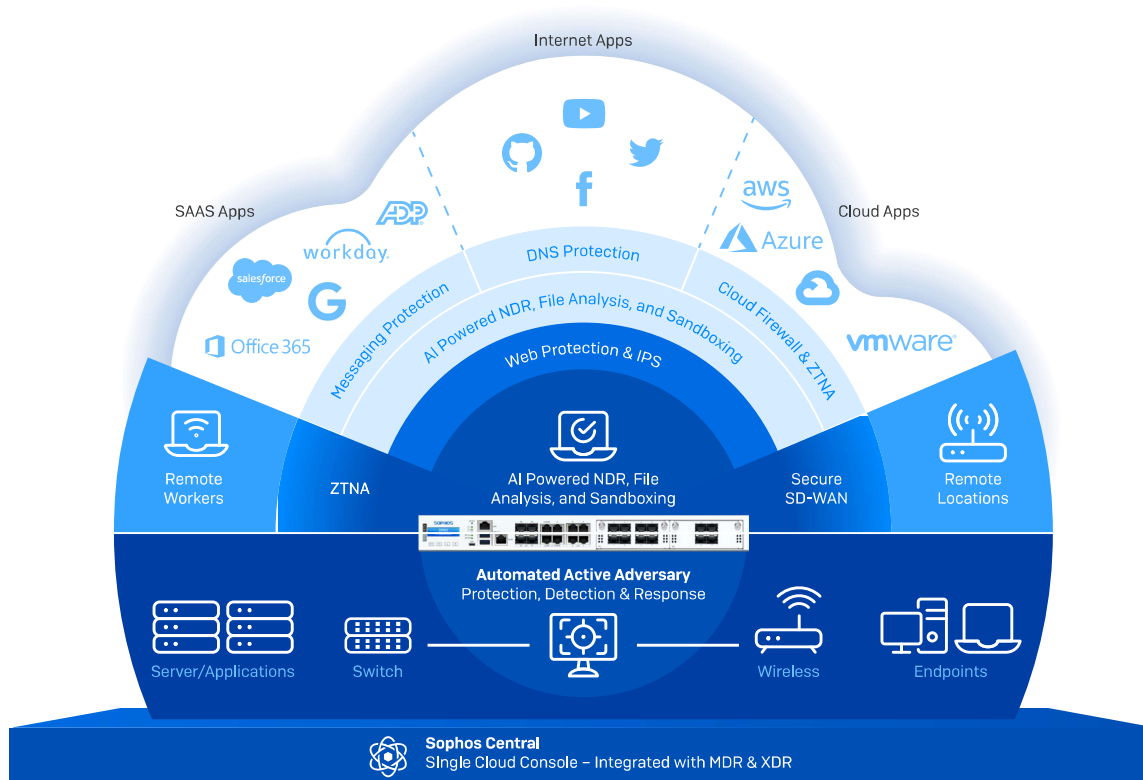
VISIT  
**Firewalls.com**  
To Order Today  
317-225-4117

# Sophos Firewall

## Much More Than a Firewall

Sophos Firewall and XGS Series appliances are at the heart of the world's best network security platform. Consolidate your network protection with our integrated and extensible platform to secure your hybrid networked world.





## Powerful Protection and Performance

Sophos Firewall includes the latest advanced protection technologies and threat intelligence, including:

- ▶ Streaming DPI engine with web protection and IPS
- ▶ Accelerated TLS 1.3 encrypted traffic inspection
- ▶ Zero-day AI and machine learning analysis
- ▶ Real-time cloud sandboxing
- ▶ DNS Protection
- ▶ Network Detection and Response

The best part is, you don't need to compromise on performance. This is thanks to our programmable Xstream architecture. It offloads benign traffic flows and crypto operations as well as VPN and select application routing to accelerate these network traffic flows and create performance headroom for traffic that actually needs deep packet inspection.

Sophos Firewall leverages the Sophos Cloud to ensure that your organization is protected from the latest threats and further maximize your performance. You get the latest AI and machine learning technology from SophosLabs working to identify previously unseen threats and malicious URLs. Using a common cloud, any new threat attacking a single Sophos customer is instantly shared across all our customers, blocking it everywhere. In addition, offloading this analysis from your firewall to the cloud boosts your performance even further.



## Active Threat Response

Sophos Firewall uniquely integrates with many Sophos products to automatically coordinate a response to an active adversary or attack:

- Sophos Endpoint and XDR
- Sophos Managed Detection and Response services
- Sophos switches and wireless access points
- Sophos ZTNA remote access
- Sophos messaging protection
- Sophos NDR
- And third-party threat intelligence solutions

Regardless of how the threat is first identified, whether at the firewall, by another product, or by a security analyst, Sophos Firewall coordinates a Synchronized Security response across Sophos products. It will identify and isolate the compromised host and prevent lateral movement and external communications until the threat can be investigated and cleaned up.

Sophos Synchronized Security integration between products also provides additional capabilities you can't get anywhere else that adds tremendous value to your network:

- Synchronized Application Control takes advantage of telemetry gathered by the endpoint about active, networked applications and shares that with the firewall enabling control of applications that might otherwise go unidentified.
- Synchronized User ID works similarly to share user identity between the endpoint agent and the firewall to enforce user-based policies without the need for a separate client or server identity solution.
- Synchronized SD-WAN leverages Synchronized Application Control for traffic matching operations to effectively route custom or otherwise unknown application traffic across your network.



## Work From Anywhere

Sophos Firewall offers the ultimate in flexible connectivity and secure access for even the most demanding networks. You get a fully integrated SD-WAN solution, along with a full suite of secure access products for Zero Trust Network Access, SD-RED edge devices, VPN, switching, and wireless — all managed from Sophos Central.

Securing and managing remote workers with ZTNA ensures users only have access to the applications they need, and not the whole network. ZTNA also integrates with Sophos Firewall and Sophos Endpoint to ensure a compromised device can't access the network at all. ZTNA also protects your applications from hacks and attacks by making them invisible to the outside world. The best part is, Sophos Firewall integrates a Sophos ZTNA gateway directly into your firewall to make deployment easy.

Sophos Firewall also includes one of the best integrated SD-WAN solutions available in any firewall. Xstream SD-WAN provides a powerful integrated SD-WAN solution with:

- Performance-based link selection and routing
- Load balancing with configurable weightings across multiple links
- Zero-impact transitions between links in the event of a disruption
- Central cloud-managed orchestration
- Xstream FastPath acceleration of VPN tunnel traffic

Sophos Firewall makes interconnecting your hybrid distributed enterprise easy and makes it extremely robust, ensuring maximum reliability and uptime.

## Single Console Management

With Sophos Central, you get a single cloud management platform for all your Sophos products, including rich and powerful tools for group firewall management, SD-WAN overlay network orchestration, ZTNA and user management, and infrastructure management for your switches and wireless access points. You also get full in-depth dashboards and reports, cross-product integration and automation with other Sophos products, and much more. Sophos Firewall is so much more than just a firewall – consolidate and streamline your network security management starting with your firewall.

- ▶ Manage all of your Sophos Firewalls and other Sophos products from a single console
- ▶ Configure changes and apply them to a group of firewalls or manage each firewall individually
- ▶ Create a backup schedule and store up to five backups in the cloud
- ▶ Schedule firmware updates across your entire network with just a few clicks
- ▶ Use zero-touch deployment for new firewalls from Sophos Central: just drop ship the device to any location and set it up remotely. A USB drive is no longer required (but can still be used if you prefer).

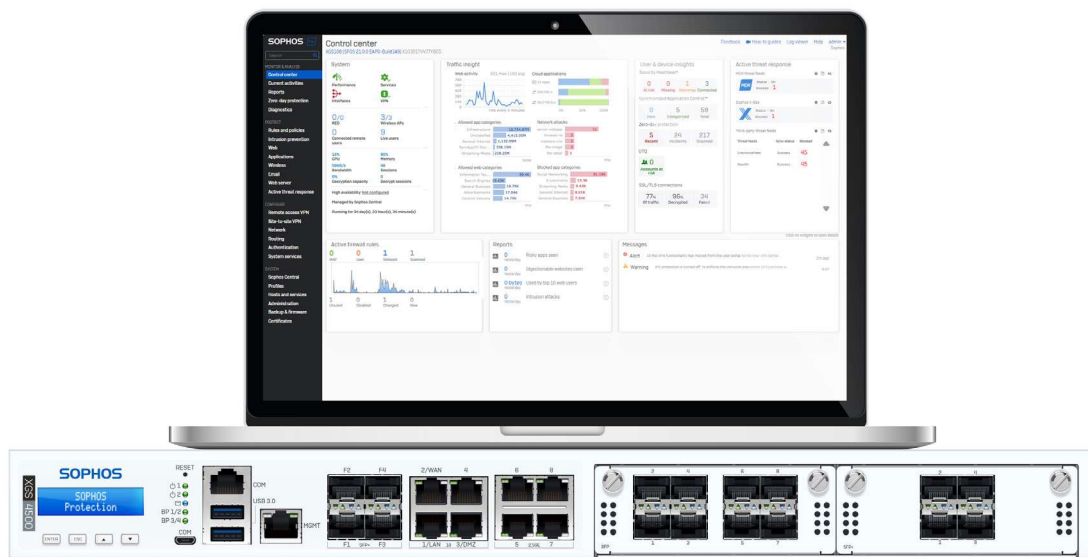
Central Management is included with all protection bundles, support on any individual subscriptions (excludes the Base License). Customers with a Base License only must add support (or any other subscription) for access to Sophos Central management and the 7-day allocation of Central Firewall Reporting. Support is also required to receive firmware updates and full access to customer support.

Sophos Central also includes powerful reporting and orchestration tools that enable you to visualize your network, web, application activity, and security over time:

- ▶ Flexible reporting combines a variety of built-in reports with powerful tools that you can use to create your own custom reports
- ▶ Analyze data to identify security gaps, suspicious user behavior, or other events requiring policy changes
- ▶ Data is shared across Sophos products through the Sophos Central data lake for threat hunting, forensics, and automated response to active threats
- ▶ Utilize point-and-click SD-WAN orchestration to easily setup a fully redundant VPN overlay network for your hybrid distributed network
- ▶ Central reporting is available at no extra cost with storage of up to seven days of reporting data for all customers with a protection bundle, individual subscription (except the Base License), or support.

Central Orchestration and Central Reporting with up to 30 days\* of data retention are included at no extra charge in the Xstream Protection bundle. Premium reporting options with longer data retention are available for optional purchase.

\* Calculated based on average traffic volumes per appliance size. In high-traffic environments, the retention period can be lower.



Learn more about the Sophos Central ecosystem at [sophos.com/firewall-central](https://sophos.com/firewall-central)

## Xstream Protection: A single bundle for ultimate protection

All the next-gen protection, performance, and value you need to power even the most demanding networks. Also available with the XGS Series model of your choice included.



### Base Firewall Features\*

- **Networking and SD-WAN:** Wireless, SD-WAN, traffic shaping
- **Protection and Performance:** Xstream architecture with Network Flow FastPath, TLS 1.3 inspection, deep packet inspection
- **SD-WAN and VPN:** Xstream SD-WAN, IPsec/SSL site-to-site and remote access VPN (unlimited), SD-RED site-to-site
- **Reporting:** Historical on-box logging and reporting



### Network Protection

- **Xstream TLS inspection:** TLS 1.3
- **Xstream DPI engine:** Streaming deep packet inspection
- **IPS:** Next-gen intrusion prevention
- **Active Threat Response:** Sophos X-Ops threat feeds
- **Synchronized Security:** Automatically identify and isolate threats
- **Clientless VPN:** HTML5
- **SD-RED VPN:** Manage SD-RED devices
- **Reporting:** Extensive network and threat reporting



### Web Protection

- **Xstream TLS inspection:** TLS 1.3
- **Xstream DPI engine:** Streaming deep packet inspection
- **Web Control:** By user, group, category, URL, keyword
- **Web Protection:** from the latest threats
- **App Control:** By user, group, category, risk, and more
- **Synchronized App Control:** Identify unknown apps
- **Synchronized SD-WAN:** Route unknown apps
- **Reporting:** Extensive web and app reporting



### Zero-Day Protection

- **Xstream TLS inspection:** TLS 1.3
- **Xstream DPI engine:** Streaming deep packet inspection
- **Zero-day threat protection:** ML and Sandboxing analysis of files
- **Machine learning:** Using multiple deep learning models
- **Cloud sandboxing:** Dynamic runtime analysis of unknown files
- **Reporting:** Extensive threat intelligence analysis reporting



### DNS Protection and Xstream Protection Bundle-Only Features

- **Domain name resolution service:** Backed by SophosLabs and powered by AI to block malicious or unwanted URLs
- **Active Threat Response:** Sophos MDR/XDR and third-party regional/vertical threat feeds
- **Active Threat Response:** Sophos NDR Essentials threat feeds (XGS hardware only)



### Sophos Central Management

- **Group firewall management:** synchronized policy and configuration, cloud backups and firmware update scheduling
- **Zero-touch deployment:** for new firewalls from the cloud
- **ZTNA Gateway:** for secure application access



### Sophos Central Orchestration

- **SD-WAN orchestration:** Point-and click site-to-site VPN orchestration
- **Cloud firewall reporting:** Multi-firewall reporting, save, schedule and export reports (30-day data retention)
- **XDR and MDR connector:** Support for XDR and MDR services

### Enhanced Support

\*Note: Customers with a Base License only must add support or another individual subscription for access to Sophos Central management and the 7-day allocation of Central Firewall Reporting. Support is also required to receive firmware updates and full access to customer support.

## All Licensing Options

We recommend the Xstream Protection bundle for the ultimate in security. If you prefer to customize your protection, subscriptions are also available for individual purchase.

Xstream Protection Bundle:	
Base License	Networking, wireless, Xstream architecture, unlimited remote access VPN, site-to-site VPN, reporting
Network Protection	Xstream TLS/DPI, IPS, Active Threat Response with Sophos X-Ops threat feeds, Heartbeat, SD-RED, reporting
Web Protection	Xstream TLS and DPI engine, web security and control, application control, reporting
Zero-Day Protection	Machine learning and sandboxing file analysis, reporting
Central Orchestration	SD-WAN VPN orchestration, Central Firewall Advanced Reporting (30-days), MDR/XDR data lake connector
DNS Protection (not sold separately)	Cloud-based DNS service for web security and compliance
Bundle-only Features (not sold separately)	Active Threat Response with MDR/XDR threat feeds and third-party threat feeds, NDR Essentials
Enhanced Support	24/7 support access, firmware and feature updates, advanced replacement hardware warranty for term

**Custom protection:** You can choose the Standard Protection bundle or purchase modules separately.

Standard Protection Bundle:	
Base License	Networking, wireless, Xstream architecture, Xstream SD-WAN, unlimited remote access VPN, site-to-site VPN
Network Protection	Xstream TLS and DPI engine, IPS, ATP, Security Heartbeat, manage SD-RED, reporting
Web Protection	Xstream TLS and DPI engine, web security and control, application control, reporting
Enhanced Support	24/7 support, firmware and feature updates, advanced replacement hardware warranty for term

Additional Protection Modules:	
Email Protection	On-box anti-spam, AV, DLP, encryption
Web Server Protection	Web Application Firewall

### Sophos Central managing and reporting:

Sophos Central Management and Reporting (Included with any bundle, support, or protection subscription*)	
Sophos Central Management	Group firewall management, backup management, firmware update scheduling, ZTNA Gateway
Sophos Central Firewall Reporting	Pre-packaged and custom report tools, with seven days cloud storage for no extra charge (see <a href="#">other options</a> )

\*Except the Base License

### Additional protection:

Additional Protection Services, Products, and Modules:	
Managed Detection and Response	24/7 threat hunting, detection, and response delivered by an expert team ( <a href="#">more info</a> )
Sophos Intercept X Endpoint with XDR	Sophos Central managed next-gen endpoint protection with EDR ( <a href="#">more info</a> )
Zero Trust Network Access	A ZTNA gateway is integrated into your firewall ( <a href="#">more info</a> )
Central Email Advanced	Sophos Central managed antispam, AV, DLP, encryption ( <a href="#">more info</a> )
Sophos Switch	Cloud-managed access layer switches ( <a href="#">more info</a> )
Sophos Wireless	Scalable, cloud-managed Wi-Fi ( <a href="#">more info</a> )

**Support:** A support subscription is required to receive firmware upgrades. Enhanced support is included in all protection bundles, but you can upgrade to enhance your support experience further.

Additional Support Options:	
Enhanced Plus Support Upgrade	Upgrade your support with VIP support, hardware warranty for add-ons, TAM option (extra cost) In Active/Passive HA scenarios, Enhanced Plus support is required in the primary device to be eligible for Advanced RMA on the passive device

### Cloud, virtual, and software application licensing options:

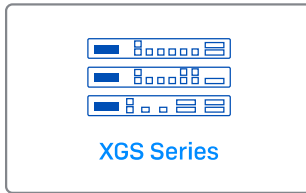
If you're deploying Sophos Firewall in the cloud, in a virtual environment, or as software on your own hardware, the licensing guide below can help you find the right option.

Model	Equivalent AWS instance	Equivalent Azure VM	Software/Virtual License*
XGS 88(w)/87(w)	t3.medium	-	2 cores
XGS 108(w)/107(w)	c5.large	Standard_F2s_v2	-
XGS 118(w)/116(w)	-	-	4 cores
XGS 2100	c5.xlarge	-	-
XGS 2300	m5.xlarge	Standard_F4s_v2	6 cores
XGS 3100	c5.2xlarge	Standard_F8s_v2	8 cores
XGS 4300	c5.4xlarge	Standard_F16s_v2	16 cores
XGS 5500	c5.9xlarge	Standard_F32s_v2	Unlimited

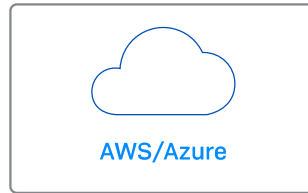
\* Based upon CPU cores

For a complete list of features included in each protection subscription, see the [Sophos Firewall Feature List](#).

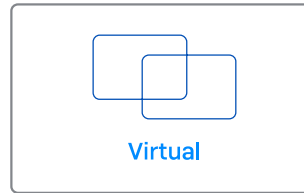
## Deployment Options



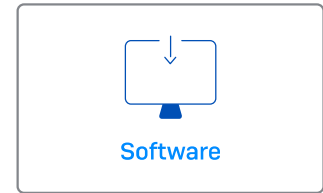
Purpose-built devices to provide the ultimate in performance.



Protect your network infrastructure in the AWS or Azure cloud.



Install on VMware, Citrix, Microsoft Hyper-V, and KVM.



Install the Sophos Firewall OS image on your own Intel hardware or server.

### Cloud

Sophos Firewall offers the best network visibility, protection, and response capabilities to secure your public, private, and hybrid cloud environments.



As an AWS Advanced Technology Partner, Sophos is a validated AWS Security Competency vendor, AWS Marketplace seller, and AWS Public Sector Partner (PSP).

Sophos Firewall is now available in the AWS Marketplace, with auto-scaling support with either a pay-as-you-go (PAYG) license model or bring your own license (BYOL) to best fit your needs.



Sophos Firewall is certified and optimized for Azure and is available in the Microsoft Azure Marketplace. Take advantage of the free test drive or the flexible PAYG or BYOL licensing options.



Sophos Firewall is Nutanix AHV and Nutanix Flow Ready, bringing the world's best next-gen firewall visibility, protection, and response to the industry's leading hyper-converged infrastructure (HCI) platform. Take advantage of a 30-day free trial using our KVM image and flexible licensing.

### Virtual and software

Sophos Firewall supports a broad range of virtualization platforms and can also be deployed as a software appliance on your own x86 Intel hardware.



See the [Licensing section](#) for available licensing options.

## Protection Modules

You can choose from a number of modules to customize the protection offered by your firewall to your individual needs and deployment scenario.

### Base Sophos Firewall

The Sophos Firewall Base License includes the Xstream architecture, networking, wireless, SD-WAN, VPN, and reporting.

#### Xstream architecture

Enables high-performance TLS 1.3 inspection, deep packet inspection, and network flow FastPath to accelerate trusted SaaS, SD-WAN, and cloud application traffic. Note that Network and Web Protection are required to get the full benefits of the Xstream architecture.

#### Xstream SD-WAN and networking

Includes all networking, routing, and SD-WAN capabilities, including zone-based stateful firewall, NAT, VLAN, SD-WAN profiles, performance-based WAN link selection and monitoring, load balancing, zero-impact WAN link transitions, and Xstream FastPath acceleration of trusted application traffic, IPsec VPN traffic, and TLS encrypted traffic flows.

#### Secure Wireless

Built-in wireless controller for Sophos APX Wi-Fi 5 access points (no longer sold). Plug-and-play access point discovery makes setup easy. Support for multiple SSIDs, hotspots, guest networks, and diverse encryption and security standards.

Wi-Fi 6/6E support is available using our separate, cloud-managed Wi-Fi solution.

#### VPN

Provides standards-based site-to-site and remote access VPN (free up to the capacity of the firewall), with support for IPsec and SSL. Sophos Connect remote access VPN client for Windows and Macs offers seamless and easy deployment and configuration options. SD-RED layer 2 site-to-site tunnels offer a lightweight robust VPN alternative.

**Reporting** (only included for customers with a valid support contract or other individual subscription)

Extensive on-box reporting provides valuable insights into threats, users, applications, web activity, and much more. Note that specific reporting functionality may be dependent on other protection modules to get the full benefits (for example, web protection or web and app reports).

The Base Firewall is included with every appliance.

\*Note: Customers with a Base License only must add support or another individual subscription for access to Sophos Central management and the 7-day allocation of Central Firewall Reporting. Support is also required to receive firmware updates and full access to customer support.

### Network Protection

All the protection you need to stop sophisticated attacks and advanced threats while providing secure network access to those you trust.

#### Next-Gen intrusion prevention system

Provides advanced protection from all types of modern attacks. It goes beyond traditional server and network resources to protect users and apps on the network as well.

#### Security Heartbeat

Creates a link between your Sophos Central protected endpoints and your firewall to identify threats faster, simplify investigation, and minimize the impact of attacks. Easily incorporate the Security Heartbeat status into firewall policies to automatically isolate compromised systems.

#### Advanced Threat Protection

Instant identification and immediate response to today's most sophisticated attacks. Multi-layered protection identifies threats instantly, and Security Heartbeat provides an emergency response.

#### Advanced VPN technologies

Adds unique and simple VPN technologies, including our clientless HTML5 self-service portal that makes remote access incredibly simple, plus management for our exclusive lightweight and secure SD-RED VPN technology.

Network Protection is included in the Xstream and Standard Protection bundles and is also available for separate purchase.

If purchased individually, support is also required to receive firmware updates and full access to customer support.

## Web Protection

Unmatched visibility and control over all of your users web and application activity.

### Powerful user and group web policy

Provides enterprise-level Secure Web Gateway policy controls to easily manage sophisticated user and group web controls. Apply policies based on uploaded web keywords indicating inappropriate use or behavior.

### Application control and QoS

Enables user-aware visibility and control over thousands of applications with granular policy and traffic-shaping (QoS) options based on application category, risk, and other characteristics. Synchronized Application Control automatically identifies all unknown, evasive, and custom applications on your network.

### Advanced web threat protection

Backed by SophosLabs, our advanced engine provides the ultimate protection from today's polymorphic and obfuscated web threats. Innovative techniques like JavaScript emulation, behavioral analysis, and origin reputation help keep your network safe.

### High-performance traffic scanning

Optimized for top performance, our Xstream SSL inspection provides ultra-low latency inspection and HTTPS scanning while maintaining performance.

Web Protection is included in the Xstream and Standard Protection bundles and is also available for separate purchase.\*

## DNS Protection

Cloud-based DNS service for added web security and compliance.

### High-performance domain-level protection

Sophos DNS Protection is a cloud-based service providing DNS resolution and an added layer of web security to your networks. It works instantly to block access to unsafe and unwanted domains across all ports, protocols, and applications from both managed and unmanaged devices.

### Integrated Compliance Controls

Easily add an additional layer of compliance controls to your network to block access to common unwanted site categories across your entire network.

### Powered by AI

Sophos DNS Protection is continually updated by SophosLabs using the latest in AI analysis to identify malicious and unwanted sites which are shared across all customers in real-time as soon as they are discovered.

DNS Protection is included in the Xstream Protection bundle and is not available for separate purchase.\*

## Zero-Day Protection

AI-driven static and dynamic file analysis techniques combine to bring unprecedented threat intelligence to your firewall and effectively identify and block ransomware and other known and unknown threats.

### Powered by SophosLabs

Powered by the industry-leading SophosLabs, the Zero-Day Protection subscription includes a fully cloud-based threat intelligence and threat analysis platform. This provides deep learning-based file analysis, detailed analysis reporting, and a threat meter to show the risk summary for a file.

We use layers of analytics to identify known and potential threats, reduce unknowns, and derive verdicts and intelligence reports for the most commonly used file types.

### Static file analysis

By harnessing the power of multiple machine learning models, global reputation, deep file scanning, and more, you can quickly identify threats without the need to execute files in real time.

### Dynamic file analysis

Execute a file in a secure cloud-based sandbox to observe its behavior and intent. Screenshots provide added insights into any key events during the analysis.

### Threat intelligence analysis reporting

Rich intelligence reports provide you with more than just a "good," "bad," or "unknown" verdict. Full insight into the nature and capabilities of a threat is delivered through the use of data science and SophosLabs research.

Zero-Day Protection is included in the Xstream Protection bundle and is also available for separate purchase.\*

## NDR Essentials

Cloud-based network detection and response

### Detect Active Threats

Sophos NDR Essentials is a cloud-based network detection and response solution that identifies active threats using encrypted communications without using TLS inspection. It also detects evasive malware attempting to access web URLs using domain generation algorithms. This provides unique threat detection capabilities to Sophos Firewall you won't find anywhere else.

### Available on XGS Series hardware only

NDR Essentials is included in the Xstream Protection bundle and is not available for separate purchase.

\*Note: If purchased individually, support is also required to receive firmware updates and full access to customer support.

## Central Orchestration

Sophos Central cloud-managed VPN orchestration, firewall reporting, and MDR/XDR integration.

### Sophos Central SD-WAN orchestration

Makes VPN orchestration easy. Wizard-based tunnel configuration helps create full mesh networks, hub-and-spoke models, or complex tunnel setups between multiple firewalls a quick point-and-click exercise. Seamlessly integrates multiple WAN link and SD-WAN functionality and routing optimizations to improve resilience performance. Also integrates with user authentication and Security Heartbeat to control access.

### Central Firewall Reporting Advanced (30 Days)

Cloud-based reporting with several pre-packaged common reports for threats, compliance, and user activity. Includes advanced options for creating custom reports and views with the option to save, schedule, or export your custom reports. Includes 30 days of log data retention with the option to add additional storage for more comprehensive historical reporting requirements.

### MDR/XDR connector

Sophos MDR provides optional 24/7 threat hunting, detection, and response delivered by an expert team as a fully managed service. Sophos XDR offers extended detection and response managed by your team.

Regardless of whether you manage it yourself or Sophos manages it for you, your Sophos Firewall is ready to share the necessary threat intelligence and data to the cloud.

Central Orchestration is included in the Xstream Protection bundle and is available for separate purchase.\*

## Zero Trust Network Access

Provide secure remote access to applications and systems behind your firewall.

### Integrated ZTNA gateway

Sophos Firewall provides an integrated Sophos ZTNA gateway at no extra cost. This simplifies ZTNA deployments by eliminating the need for a separate VM gateway, making deployments faster and easier. Sophos ZTNA is the ultimate remote access VPN replacement, providing better security, easier management, and a transparent user experience.

ZTNA gateways are available at no extra cost. User-based client licenses for ZTNA are sold separately.

\*For any subscription purchased individually, support is also required to receive firmware updates and full access to customer support.

## Email Protection

Consolidate your email protection with anti-spam, DLP, and encryption. We recommend Sophos Central Email Advanced for the best cloud-based email protection solution. If you require on-box email protection, this module offers essential anti-spam, DLP, and encryption.

### Integrated message transfer agent

Ensures always-on business continuity for your email, allowing the firewall to automatically queue mail in the event that servers become unavailable.

### Live anti-spam

Provides protection from the latest spam campaigns, phishing attacks, and malicious attachments.

### Self-serve quarantine

Gives employees direct control over their spam quarantine, saving you time and effort.

### SPX email encryption

Unique to Sophos, SPX makes it easy to send encrypted emails to anyone, even those without any kind of trust infrastructure, using our patent-pending password-based encryption technology.

### Data loss prevention

Policy-based DLP can automatically trigger encryption or block/notify based on the presence of sensitive data in emails leaving the organization.

Email Protection is available for individual purchase only.\*

## Web Server Protection

Harden your web servers and business applications against hacking attempts and provide secure access.

### Business application policy templates

Pre-defined policy templates let you protect common applications like Microsoft Exchange Outlook Anywhere or SharePoint quickly and easily.

### Protection from the latest hacks and attacks

Offers a variety of advanced protection technologies, including URL and form hardening, deep-linking and directory traversal prevention, SQL injection and cross-site scripting protection, cookie signing, and more.

### Reverse Proxy

Authentication options, SSL offloading, and server load balancing ensure maximum protection and performance for your servers being accessed from the internet.

Web Server Protection is available for individual purchase only.\*

## Sophos XGS Series Appliances

The XGS Series models offer excellent performance and connectivity at every price point to power the protection you need for today's diverse, distributed, and encrypted networks.

### Product Matrix

Model		Tech Specs			Throughput			
Model	Form Factor	Ports/Slots (Max Ports)	w-model	Swappable Components	Firewall (Gbps)	IPsec VPN (Gbps)	Threat Protection (Gbps)	Xstream SSL/TLS (Gbps)
XGS 88(w)	Gen.2 Desktop**	4/- (4)	Wi-Fi 6	n/a	9.9	6.0	2.0	600 Mbps
XGS 108(w)		7/-(7)		Optional: 2 <sup>nd</sup> power supply	12.5	8.2	2.5	800 Mbps
XGS 118(w)		10/1(10)		Optional: 2 <sup>nd</sup> power supply, 5G module*	15.5	13.0	3.2	1.1
XGS 128(w)		10/1(10)			19.1	15.0	4.0	1.4
XGS 138		8/1(8)	n/a	19.1	6.6	4.7	1.7	
XGS 2100	1U Short	10/1 (18)	n/a	Optional: external power supply	30.0	17.0	5.0	1.1
XGS 2300			n/a		39.0	20.5	5.5	1.4
XGS 3100		12/1 (20)	n/a		47.0	25.5	7.4	2.4
XGS 3300			n/a		58.0	31.1	10.0	3.1
XGS 4300	1U Long	12/2 (28)	n/a	Optional: internal power supply	75.0	62.5	25.2	8.0
XGS 4500			n/a		80.0	75.5	31.8	10.6
XGS 5500	2U	16/3 (48)	n/a	Built in: redundant power, SSDs, fans	100.0	92.5	46.0	13.5
XGS 6500		20/4 (68)	n/a		120.0	109.8	53.5	16.0
XGS 7500			n/a		160.0	117.0	70.0	19.5
XGS 8500		22/4 (70)	n/a		190.0	141.0	92.5	24.0

\* Not available in Japan

\*\* All Gen.2 desktop models include two or more 2.5G ports

### Performance test methodology

**General:** Maximum throughput measured under ideal test conditions using industry-standard Keysight-Ixia BreakingPoint test tools. Actual performance may vary depending on network conditions and activated services

- **Firewall:** Measured using HTTP traffic and 512 KB response size.
- **Firewall IMIX:** UDP throughput based on a combination of 66 byte, 570 byte, and 1518 byte packet sizes.
- **IPS:** Measured with IPS with HTTP traffic using default IPS ruleset and 512 KB object size.
- **IPsec VPN:** HTTP throughput using multiple tunnels and 512 KB HTTP response size.
- **TLS Inspection:** Performance measured with IPS with HTTPS sessions and different cipher suites.
- **Threat Protection:** Measured with firewall, IPS, application control, and malware prevention enabled using Enterprise Traffic Mix.
- **NGFW:** Measured with IPS and application control enabled with HTTP traffic using default IPS ruleset and 512KB object size.

### Need sizing help?

Sophos offers free sizing assistance and a firewall sizing tool for partners via the Partner Portal.

# Sophos XGS Series Desktop: SMB and Branch Office

Our desktop appliances offer great value, performance, and efficiency for small businesses, retail outlets, and branch offices.

## 2<sup>nd</sup> Generation XGS Desktop

The 2nd generation XGS desktop models unlock a wealth of new features and high-speed connectivity options.

### Product highlights

- Accelerated performance:** up to double the throughput of Gen.1 models plus Xstream virtual FastPath acceleration for IPsec VPN (XGS 88 to XGS 128) in combination with SFOS v21 and higher
- High-speed connectivity built in:** 2.5 GE interfaces on every model, two built-in 10 GE SFP+ interfaces on the XGS 138, Wi-Fi integrated models support Wi-Fi 6 (802.11ax) with concurrent use of the 2.4 and 5 GHz bands for better performance
- Power and environment:** up to 50% lower power consumption, fanless XGS 88 and 108 models for whisper-quiet operation, optimized thermal design for XGS 118 and above, redundant power option for all XGS 1xx models
- Optional connectivity:** new 5G module available exclusively for Gen.2 models for more cost-effective redundant connectivity
- Streamlined hardware architecture:** the XGS 88 to XGS 128 models boast a new single-CPU architecture while the XGS 138 has a refreshed dual-processor architecture

## Available models

### XGS 88 and XGS 88w

See detailed [technical specifications](#)

### XGS 108, XGS 108w

See detailed [technical specifications](#)

### XGS 118, XGS 118w

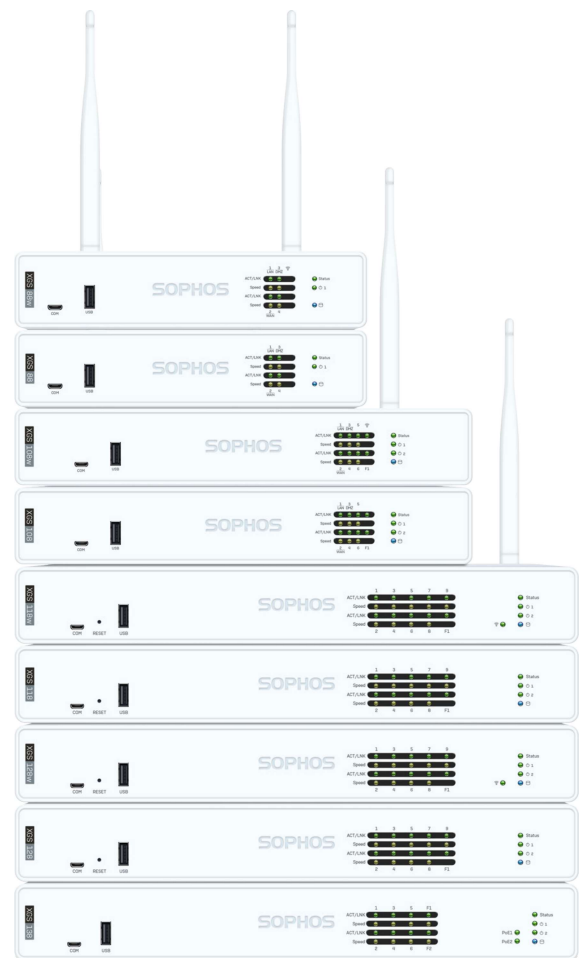
See detailed [technical specifications](#)

### XGS 128, XGS 128w

See detailed [technical specifications](#)

### XGS 138

See detailed [technical specifications](#)



**Note:** All protection features are supported on every XGS 1xx model and most on XGS 88(w)

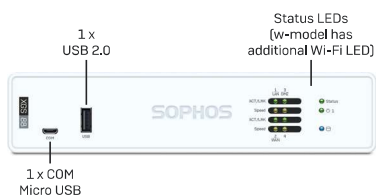
# Sophos XGS Series Desktop: SMB and Branch Office

## Gen.2: XGS 88 and XGS 88w

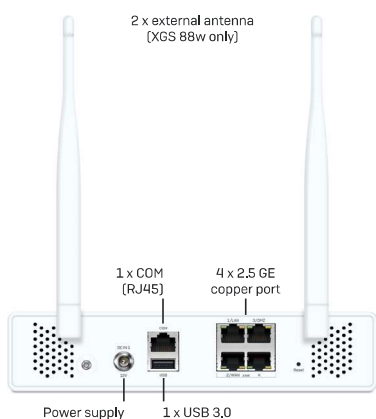
### Technical specifications

**Note:** The XGS 88 and 88w do not support some advanced features like on-box reporting, dual AV scanning, WAF AV scanning, and the email message transfer agent (MTA) functionality. If you need these capabilities, the XGS 108(w) is recommended.

#### Front View



#### Back View



#### Physical Specifications

<b>Mounting</b>	Rackmount kit available (to be ordered separately)
<b>Dimensions: Width X height X depth</b>	200 x 44 x 180 mm
<b>Weight</b>	1.4 kg/3.08 lbs (unpacked) 2 kg/4.41 lbs (packed) (w-model minimally more)

#### Environment

<b>Power supply</b>	External auto-ranging AC-DC 100-240VAC, 1.7A@50-60 Hz 12VDC, 3.33A, 40W
<b>Power consumption (typical)</b>	12.5 W/42.65 BTU/hr [88 idle] 14.5 W/49.48 BTU/hr [88w idle] 18 W/61.42 BTU/hr [88 max.] 22 W/75.07 BTU/hr [88w max.]
<b>Noise level [avg.]</b>	0 dBA - fanless
<b>Operating temperature</b>	0°C to 40°C (operating) -20°C to +70°C (storage)
<b>Humidity</b>	10% to 90%, non-condensing

#### Product Certifications

<b>Certifications</b>	CB, CE, UKCA, UL, FCC, ISED, VCCI, KC*, BSMI, RCM, NOM, Anatel*, TEC
-----------------------	--

\* XGS 88 only

Performance	XGS 88(w)
Firewall throughput	9,900 Mbps
Firewall IMIX	6,500 Mbps
IPS throughput	2,000 Mbps
Threat protection throughput	2,000 Mbps
NGFW	2,000 Mbps
Concurrent connections	1,600,000
New connections/sec	40,500
IPsec VPN throughput	6,000 Mbps
IPsec VPN concurrent tunnels	500
SSL VPN concurrent tunnels	500
Xstream SSL/TLS Inspection	600 Mbps
Xstream SSL/TLS concurrent connections	8,192

Note: For performance testing methodology, see [page 10](#)

#### Wireless Specification (XGS 88w only)

<b>No. of antennas</b>	2 external
<b>MIMO capabilities</b>	2 x 2:2
<b>Wireless interface</b>	Wi-Fi 6 (802.11ax) 2.4 GHz/5 GHz concurrent

#### Physical Interfaces

<b>Storage</b>	16 GB eMMC
<b>Ethernet interfaces (fixed)</b>	4 x 2.5 GE copper
<b>Management ports</b>	1 x COM RJ45 1 x Micro-USB (cable incl.)
<b>Other I/O ports</b>	1 x USB 2.0 (front) 1 x USB 3.0 (rear)
<b>Number of expansion slots</b>	0
<b>Optional add-on connectivity</b>	n/a

# Sophos XGS Series Desktop: SMB and Branch Office

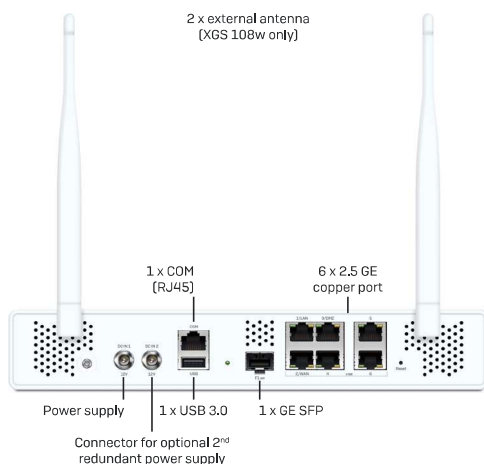
## Gen.2: XGS 108, XGS 108w

### Technical specifications

#### Front View



#### Back View



#### Physical Specifications

Mounting	Rackmount kit available (to be ordered separately)
Dimensions: Width X height X depth	260 x 44 x 180 mm
Weight	1.8 kg/3.97 lbs (unpacked) 2.4 kg/5.29 lbs (packed) (w-model minimally more)

#### Environment

Power supply	External auto-ranging AC-DC 100-240VAC, 2A@50-60 Hz 12VDC, 5A, 60W Optional second redundant power supply
Power consumption	21.5 W/73.36 BTU/hr (108 idle) 25.5 W/87.01 BTU/hr (108w idle) 27 W/92.13 BTU/hr (108 max.) 30 W/102.36 BTU/hr (108w max.)
Noise level [avg.]	0 dBA - fanless
Operating temperature	0°C to 40°C (operating) -20°C to +70°C (storage)
Humidity	10% to 90%, non-condensing

#### Product Certifications

Certifications	CB, CE, UKCA, UL, FCC, ISED, VCCI, KC*, BSMI, RCM, NOM, Anatel*, TEC
----------------	--

\* XGS 108 only

Performance	XGS 108(w)
Firewall throughput	12,500 Mbps
Firewall IMIX	8,100 Mbps
IPS throughput	2,500 Mbps
Threat Protection throughput	2,500 Mbps
NGFW	2,600 Mbps
Concurrent connections	4,190,000
New connections/sec	53,000
IPsec VPN throughput	8,250 Mbps
SSL VPN concurrent tunnels	1,000
IPsec VPN concurrent tunnels	1,000
Xstream SSL/TLS Inspection	800 Mbps
Xstream SSL/TLS concurrent connections	12,288

Note: For performance testing methodology, see [page 10](#)

#### Wireless Specification (XGS 108w only)

No. of antennas	2 external
MIMO capabilities	2 x 2:2
Wireless interface	Wi-Fi 6 (802.11ax) 2.4 GHz/5 GHz concurrent

#### Physical Interfaces

Storage (local quarantine/logs)	64 GB UFS 2.1
Ethernet interfaces (fixed)	6 x 2.5 GE copper 1 x SFP fiber
Management ports	1 x COM RJ45 1 x Micro-USB (cable incl.)
Other I/O ports	1 x USB 2.0 (front) 1 x USB 3.0 (rear)
Number of expansion slots	0
Optional add-on connectivity	n/a

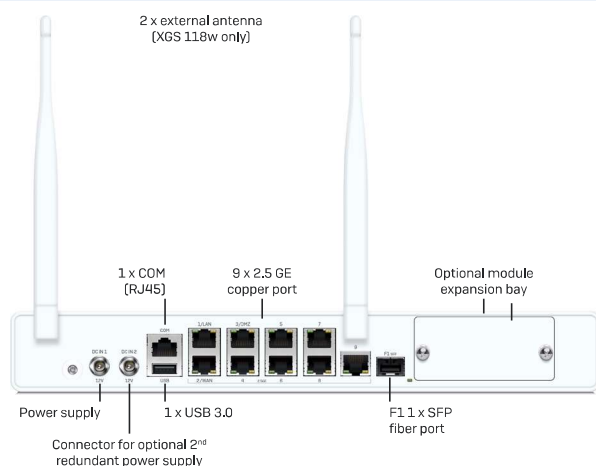
# Sophos XGS Series Desktop: SMB and Branch Office Gen.2: XGS 118, XGS 118w

## Technical specifications

### Front View



### Back View



### Physical Specifications

Mounting	Rackmount kit available (to be ordered separately)
Dimensions: Width X height X depth	320 x 44 x 212 mm
Weight	2.4 kg/5.29 lbs (unpacked) 3.9 kg/8.60 lbs (packed) (w-model minimally more)

### Environment

Power supply	External auto-ranging AC-DC 100-240VAC, 2A@50-60 Hz 12VDC, 5.42A, 65W Optional second redundant power supply
Power consumption	25.5 W/87.01 BTU/hr [118 idle] 29.5 W/100.66 BTU/hr [118w idle] 28 W/95.54 BTU/hr [118 max.] 34 W/116.01 BTU/hr [118w max.]
Noise level (avg.) Typical/Max. operation	XGS 118 - 17.3/26.9 dBA XGS 118(w) - 19.5/31 dBA
Operating temperature	0°C to 40°C (operating) -20°C to +70°C (storage)
Humidity	10% to 90%, non-condensing

### Product Certifications

Certifications	CB, CE, UKCA, UL, FCC, ISED, VCCI, KC*, BSMI, RCM, NOM, Anatel*, TEC
----------------	--

\* XGS 118 only

Performance	XGS 118(w)
Firewall throughput	15,500 Mbps
Firewall IMIX	11,000 Mbps
IPS throughput	3,500 Mbps
Threat Protection throughput	3,250 Mbps
NGFW	3,950 Mbps
Concurrent connections	5,500,000
New connections/sec	62,650
IPsec VPN throughput	13,000 Mbps
IPsec VPN concurrent tunnels	1,500
SSL VPN concurrent tunnels	1,250
Xstream SSL/TLS Inspection	1,100 Mbps
Xstream SSL/TLS concurrent connections	18,432

Note: For performance testing methodology, see [page 10](#)

### Wireless Specification (XGS 118w only)

No. of antennas	2 external
MIMO capabilities	2 x 2:2
Wireless interface	Wi-Fi 6 (802.11ax) 2.4 GHz/5 GHz concurrent

### Physical Interfaces

Storage (local quarantine/logs)	64 GB UFS 2.1
Ethernet interfaces (fixed)	9 x 2.5 GE copper 1 x SFP fiber
Power-over-Ethernet (fixed)	0
Management ports	1 x COM RJ45 1 x Micro-USB (cable incl.)
Other I/O ports	1 x USB 2.0 (front) 1 x USB 3.0 (rear)
Number of expansion slots	1
Optional add-on connectivity	5G module (Gen.2)

\* SFP transceivers sold separately

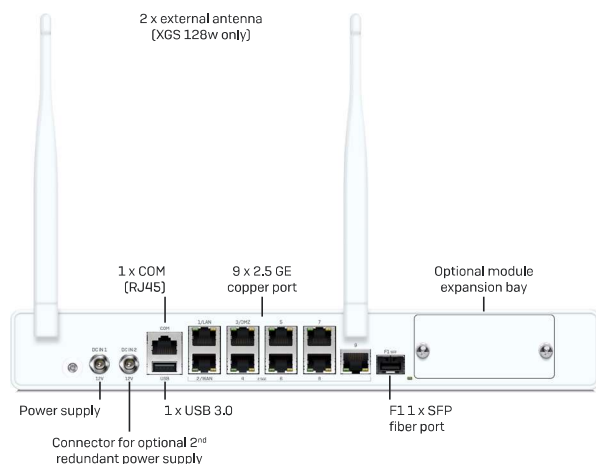
# Sophos XGS Series Desktop: SMB and Branch Office Gen.2: XGS 128, XGS 128w

## Technical specifications

### Front View



### Back View



### Physical Specifications

Mounting	Rackmount kit available (to be ordered separately)
Dimensions: Width X height X depth	320 x 44 x 212 mm
Weight	2.4 kg/5.29 lbs (unpacked) 3.9 kg/8.60 lbs (packed) (w-model minimally more)

### Environment

Power supply	External auto-ranging AC-DC 100-240VAC, 2A@50-60 Hz 12VDC, 5.42A, 65W Optional second redundant power supply
Power consumption	26.5 W/90.42 BTU/hr [128 idle] 30 W/102.36 BTU/hr [128w idle] 30 W/102.36 BTU/hr [128 max.] 35 W/119.42 BTU/hr [128w max.]
Noise level (avg.) Typical/Max. operation	XGS 128 - 17.3/26.9 dBA XGS 128(w) - 19.5/31 dBA
Operating temperature	0°C to 40°C (operating) -20°C to +70°C (storage)
Humidity	10% to 90%, non-condensing

### Product Certifications

Certifications	CB, CE, UKCA, UL, FCC, ISED, VCCI, KC*, BSMI, RCM, NOM, Anatel*, TEC
----------------	--

\* XGS 128 only

Performance	XGS 128(w)
Firewall throughput	19,100 Mbps
Firewall IMIX	14,500 Mbps
IPS throughput	4,650 Mbps
Threat Protection throughput	4,000 Mbps
NGFW	4,350 Mbps
Concurrent connections	6,000,000
New connections/sec	72,250
IPsec VPN throughput	15,050 Mbps
IPsec VPN concurrent tunnels	2,500
SSL VPN concurrent tunnels	1,500
Xstream SSL/TLS Inspection	1,450 Mbps
Xstream SSL/TLS concurrent connections	18,432

Note: For performance testing methodology, see [page 10](#)

### Wireless Specification (XGS 128w only)

No. of antennas	2 external
MIMO capabilities	2 x 2:2
Wireless interface	Wi-Fi 6 (802.11ax) 2.4 GHz/5 GHz concurrent

### Physical Interfaces

Storage (local quarantine/logs)	64 GB UFS 2.1
Ethernet interfaces (fixed)	9 x 2.5 GE copper 1 x SFP fiber
Power-over-Ethernet (fixed)	0
Management ports	1 x COM RJ45 1 x Micro-USB (cable incl.)
Other I/O ports	1 x USB 2.0 (front) 1 x USB 3.0 (rear)
Number of expansion slots	1
Optional add-on connectivity	5G module (Gen.2)

